

PROTECT

THOSE WHO PROTECT YOU

**OBEY THE MOVE-OVER LAW
EVERYWHERE ON THE ROAD NETWORK**

You must “move over” in order to create a buffer lane when any of the following vehicles are stopped in a traffic lane or on the shoulder of the road and their flashing or rotating lights, or their yellow arrow light signals, are activated:

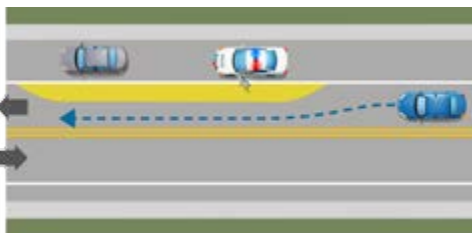
- an ambulance or a fire department, police or carrier enforcement vehicle;
- a surveillance vehicle; or
- a tow truck.

“MOVE OVER” MANOEUVRES TO CREATE A BUFFER LANE

Two-way roads, a single lane in each direction

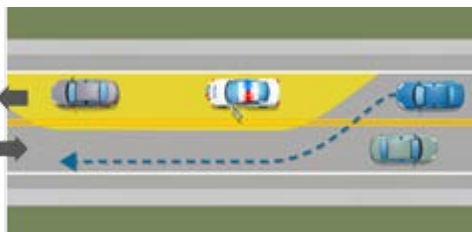
Intervention on the shoulder

- 1 Slow down.
- 2 Put as much distance between you and the stopped vehicle, while remaining in the same lane.



Intervention in a traffic lane

- 1 Slow down.
- 2 If necessary, stop to yield the right of way to oncoming vehicles.
- 3 Change lanes after making sure that you can do so safely.

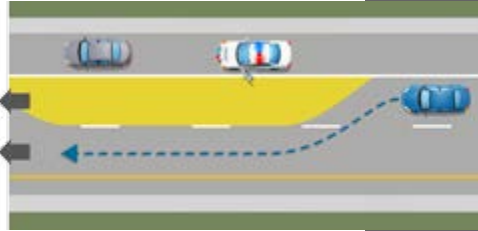


“MOVE OVER” MANOEUVRES TO CREATE A BUFFER LANE

Highways and roads with
multiple lanes in both directions

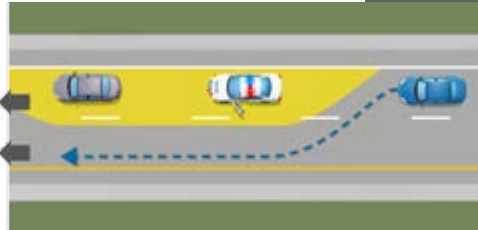
Intervention on the shoulder

- 1 Slow down.
- 2 Change lanes after making sure that you can do so safely.
- 3 If you cannot change lanes, move over as far as you can—while remaining in the same lane—so as to leave as much space as possible between you and the stopped vehicle.



Intervention in a traffic lane

- 1 Slow down.
- 2 If necessary, come to a complete stop.
- 3 Change lanes after making sure that you can do so safely.



The Move-Over Law applies everywhere—
on highways, country roads and city streets.
Offenders face a **\$200 to \$300**
fine and **4 demerit points**.

MoveOverLawQuebec.gouv.qc.ca

Original text in French