



## COMPLEMENTARY GUIDE

INTERACTIVE EDUCATIONAL TOOL

Québec 



**Axelle et Pitchouf: Let's Go!** aims to raise awareness among 5- to 8-year-old children about adopting safe behaviours when they are travelling on foot or by school bus.

The tool includes 10 short videos that explain the right behaviours to adopt when out and about. Each video is followed by an interactive game that allows for the application of newly acquired concepts.

This guide includes complementary information on the contents of each animation.

## TABLE OF CONTENT

GAME 1 .....	Crossing the street .....	3
GAME 2 .....	Being seen properly .....	5
GAME 3 .....	Walking in the street .....	7
GAME 4 .....	Pedestrian crosswalks .....	9
GAME 5 .....	Traffic lights .....	11
GAME 6 .....	Getting on the bus .....	13
GAME 7 .....	In the bus .....	15
GAME 8 .....	Getting off the bus .....	17
GAME 9 .....	Crossing the street in front of the bus .....	19
GAME 10 .....	Around large vehicles .....	21
COMPLEMENT ..	A good understanding of blind spots .....	23

# Crossing the street



By performing the correct choreography (left, right, left, behind), the players must check whether there are any vehicles and decide whether or not Axelle can cross the street.

**Both components of the answer—the choreography and the decision—must be correct in order to move onto the next situation.** The answer “cross” is always considered incorrect if the choreography is not completed or performed in the right order.

## SITUATION 1

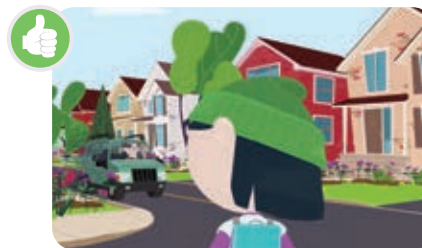
**Correct answer :**  
Cross



After performing the choreography, we see there are no vehicles.

## SITUATION 2

**Correct answer :**  
Don't cross



From the first look to the left, we see there is a car.

## SITUATION 3

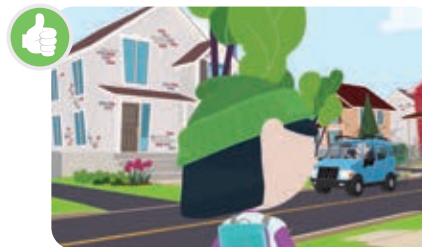
**Correct answer :**  
Don't cross



When looking to the left the second time, we see there is a car.

## SITUATION 4

**Correct answer :**  
Don't cross



When looking to the right, we see there is a car.

# Crossing the street



## SITUATION 5

**Correct answer:**  
Don't cross



When looking behind, we see there is a car.

## SITUATION 6

**Correct answer:**  
Cross



After completing the choreography, we see there are no cars.

## SITUATION 7

**Correct answer:**  
Don't cross



When looking to the right, we see that two vehicles are approaching.

Before crossing, we have to make sure that both vehicles have made their mandatory stop and are yielding the right of way. In the meantime, we cannot cross.

## SITUATION 8

**Correct answer:**  
Don't cross



When looking behind, we see there is a vehicle. The light is green, but the white silhouette representing a pedestrian is not lit. In this situation, the motorist has the right of way.

# Being seen properly



The players must place Axelle and Pitchouf at a safe place, so that they can be seen by the driver and make eye contact with him or her.

## SITUATION 1

**Correct answer:**  
The dot in front of the pedestrian crosswalk.



It is the only place where the driver can expect to see a pedestrian cross.

## SITUATION 2

**Correct answer:**  
the dot in front of the pedestrian crosswalk.



If Axelle and Pitchouf cross in front of or behind a parked vehicle, the motorist cannot see them very well and cannot expect to see them crossing at either of these locations.

## SITUATION 3

**Correct answer:**  
The dot at the intersection.



If Axelle and Pitchouf cross in front of or behind a parked vehicle, the motorist cannot see them very well and cannot expect to see them crossing at either of these locations.



Even if some adults sometimes do so, we must avoid crossing in the middle of the street.



# Being seen properly



## SITUATION 4

**Correct answer:**  
The dot at the intersection.



If Axelle and Pitchouf cross in front of or behind a parked vehicle, the motorist cannot see them very well and cannot expect to see them crossing at either of these locations.

In addition, we must never walk in the middle of the street. That space is reserved for vehicles and cyclists.

## SITUATION 5

**Correct answer:**  
The dot near the pedestrian crosswalk.



The other dots are all located near a heavy vehicle or in the middle of the street. At most of these places, Axelle is hidden by the heavy vehicle. The driver of that vehicle and the other drivers are therefore unlikely to see her.

It is also important to avoid crossing in the middle of the street. Drivers do not expect to see a pedestrian cross there.

# Walking in the street



The player must find the best route for Axelle to get to Pitchouf safely.

## SITUATION 1

**Correct answer:**  
The route that starts near the pedestrian crosswalk.



In both cases, Axelle uses the sidewalk, but in one case, she crosses the street elsewhere than at the pedestrian crosswalk.

## SITUATION 2

**Correct answer:**  
The route along the side of the street.



Using this route, Axelle can walk facing automobile traffic (left lane for pedestrians) so she can see oncoming vehicles and react to an unforeseen situation.

Of course, it is important to avoid walking in the middle of the lane because vehicles can travel on both sides of the street at that location.

## SITUATION 3

**Correct answer:**  
The route that goes through the sidewalk and the pedestrian crosswalk.



Axelle must use the sidewalk. Even if she can walk along the side of the street facing traffic, if there is a sidewalk, that's always the best option!



It is important to get to the pedestrian crosswalks and use them whenever there are any on the route.

# Walking in the street



## SITUATION 4

### Correct answer:

The route along the side of the street, facing traffic.



Since there is no sidewalk, Axelle is walking against the flow of traffic, where she can see vehicles coming towards her.



When a vehicle is parked in the street, it is important to make sure the lane is free before cautiously walking around it.

## SITUATION 5

### Correct answer:

The route that goes through the sidewalk and the pedestrian crosswalk.



Axelle must use the sidewalk and avoid going through the parking lot as drivers may not see her because of the parked vehicles. Walking in the street is not the best option because there is a sidewalk.



# Pedestrian crosswalks



At a pedestrian crosswalk, the players must perform the choreography and determine whether or not Axelle and Pitchouf can cross, or if they can cross while running.

In Québec, there are three types of pedestrian crosswalks: protected, partially protected and unprotected.

**Protected:** all traffic is blocked to yield the entire right of way to pedestrians (red lights in all directions).

**Partially protected:** certain vehicle movements are prohibited during the first pedestrian phase, after which they are authorized.

**Unprotected:** certain vehicle movements are authorized during the entire pedestrian phase (green light).

In this game, the protected and unprotected types are used in order to illustrate a greater variety of situations.



## SITUATION 1

**Correct answer:**  
Cross



The white silhouette representing a pedestrian is lit and there are no vehicles in sight.

## SITUATION 2

**Correct answer:**  
Cross



The white silhouette representing a pedestrian is lit and the vehicles are stopped.

## SITUATION 3

**Correct answer:**  
Don't cross



There are no vehicles in sight, but the orange hand is flashing. The countdown timer only indicates 2 seconds left, which is not enough time to cross.

# Pedestrian crosswalks



## SITUATION 4

**Correct answer:**  
Don't cross



A vehicle is stopped, but the orange hand is flashing. The countdown timer only indicates 2 seconds left, which is not enough time to cross.

## SITUATION 5

**Correct answer:**  
Don't cross



There are no vehicles in sight, the orange hand is lit and the countdown timer is at 0.

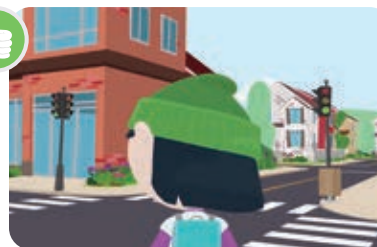
# Traffic lights



At a traffic light, the players must decide whether or not Axelle and Pitchouf can cross, or if they can cross while running.

## SITUATION 1

**Correct answer:**  
Cross



The light is green and there are no vehicles in sight.

## SITUATION 2

**Correct answer:**  
Cross



The light is green and the car is stopped at a red light.

## SITUATION 3

**Correct answer:**  
Don't cross



The light is yellow.

## SITUATION 4

**Correct answer:**  
Don't cross



The lane is free, but the light is yellow.

# Traffic lights



## SITUATION 5

**Correct answer:**  
Don't cross



The lane is free, but the light is red.

# Getting on the bus



In this game, the players must determine which character is not following the safety rules while waiting for the bus.

## SITUATION 1

### Correct answer:

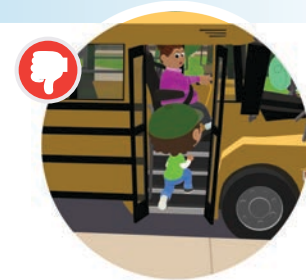
The young girl with the long blonde hair. She is shoving two of her friends who are patiently waiting in line.



## SITUATION 2

### Correct answer:

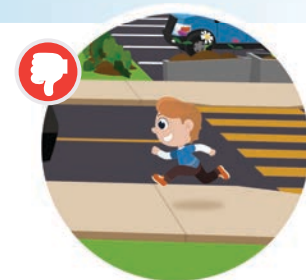
The boy who is getting on the bus, because he is not holding onto the railing as he is walking up the steps. He could trip and be injured.



## SITUATION 3

### Correct answer:

The student who is running to the bus stop. He could trip near the bus and be injured. Moreover, the driver may not see him.



When you are late, you can step it up, but without running.



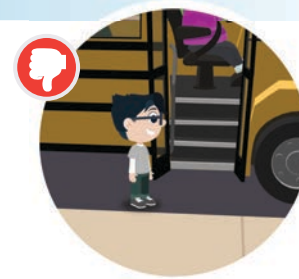
# Getting on the bus



## SITUATION 4

### Correct answer:

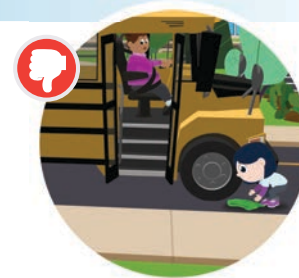
The boy with the eyeglasses and the grey sweater, because he is waiting in the street and too close to the bus. He should wait for his turn in line on the sidewalk with his friends.



## SITUATION 5

### Correct answer:

It is Axelle who is not following the rules by picking up her tuque. When we drop an object near a bus, we have to tell the driver and ask permission before going to get it.



# In the bus



In this game, the players must determine which character is not following the safety rules in the bus.

## SITUATION 1

### Correct answer:

The boy with the eyeglasses. He is standing while the bus is moving. Should the driver have to brake suddenly, he could be seriously injured.



## SITUATION 2

### Correct answer:

The two students in the back of the bus. They are talking loudly, which could prevent the driver from concentrating on the road.



## SITUATION 3

### Correct answer:

The young girl with the long black hair. As she stuck her arm outside and the bus was moving forward, she could hit an object or another vehicle and be injured. Moreover, should the driver have to brake suddenly, she could be seriously injured because she is not properly seated.



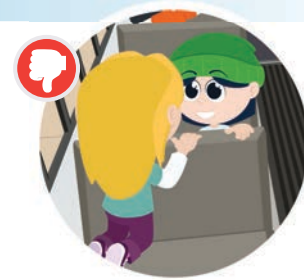
# In the bus



## SITUATION 4

### Correct answer:

The young girl with the blonde hair, because she is kneeling on her seat. Should the driver have to brake suddenly, she could be seriously injured.



## SITUATION 5

### Correct answer:

The young girl with the yellow sweater. She is standing in the middle of the aisle while the bus is moving. Should the driver have to brake suddenly, she could be injured. It is important to always wait until the bus has come to a complete stop before getting up and moving towards the front to get off the bus. Moreover, this student may be bothering the driver. It is important to let her concentrate on the road.



# Getting off the bus



The players must determine the safest place for Axelle and Pitchouf to go after they get off the bus.

## Danger zone

**Red** = Very dangerous, as it is very close to the wheels.

**Orange** = Although less dangerous than the red zone, it carries its own risks because the children are less visible there.

## SITUATION 1

### Correct answer:

The place that is farthest away from the bus, because they are out of the danger zone there.



## SITUATION 2

### Correct answer:

The dot beside the bus, outside the danger zone.  
The space in front of the bus is dangerous because the driver may not be able to see them if they were there.  
The space nearest the bus is in the danger zone.



## SITUATION 3

### Correct answer:

The only dot that shows a safe space is the one on the grass.

When there is no sidewalk and we cannot find safe refuge on the grass, it is best to stay as close to the side of the road as possible in order to get far enough away from the bus. We have to be far enough away that we are unable to touch the bus.



At all times, we must respect private property and avoid walking on it unnecessarily.

# Getting off the bus



## SITUATION 1

### Correct answer:

The only dot that shows a safe space is the one on the grass.

When there is no sidewalk and we cannot find safe refuge on the grass, it is best to stay as close to the side of the road as possible in order to get far enough away from the bus. We have to be far enough away that we are unable to touch the bus.



At all times, we must respect private property and avoid walking on it unnecessarily.





# Crossing the street in front of the bus



In each of the following situations, the players must determine whether or not Axelle and Pitchouf can cross after getting off the bus.

It is recommended that we look toward both sides of the street again when we reach half of the crossing distance to make sure all of the vehicles around the bus have come to a stop.



## SITUATION 1

**Correct answer:**  
Don't cross



Axelle and Pitchouf are behind the bus and in a danger zone. The bus driver cannot see them well and make sure traffic has come to a stop around the bus.

## SITUATION 2

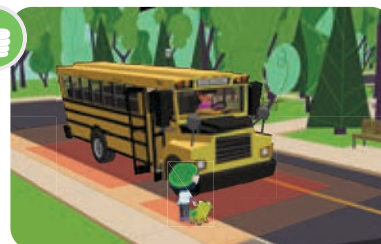
**Correct answer:**  
Don't cross



Axelle and Pitchouf are 10 steps away from the bus, but the bus driver is not looking at them. She therefore cannot assure them that traffic has indeed stopped.

## SITUATION 3

**Correct answer:**  
Don't cross



Axelle and Pitchouf are too close to the bus. They are fewer than 10 steps away, which means they are in a danger zone. Moreover, since the driver is not looking at them, she cannot assure them they can cross safely.

## SITUATION 4

**Correct answer:**  
Cross



Axelle and Pitchouf are 10 steps away from the bus and the driver can confirm to them that the lane is free.

# Crossing the street in front of the bus



## SITUATION 5

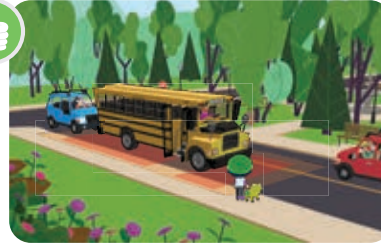
**Correct answer:**  
Don't cross



Axelle and Pitchouf are 10 steps away from the bus and the driver is looking at them, but a motorist is driving ahead anyway.

## SITUATION 6

**Correct answer:**  
Cross



Axelle and Pitchouf are 10 steps away from the bus, the bus driver is looking at them and all of the vehicles are stopped around the bus.

# Around large vehicles



Axelle and Pitchouf are near large vehicles. The players must move them to a safe place.

Every vehicle has blind spots, i.e., areas around the vehicle that cannot be seen by the driver. The blind spots are proportional to the vehicle's height and length, even if the mirrors are adjusted correctly.

To further explore the notion of blind spots with the students, a supplemental exercise is presented at the end of this document.

## SITUATION 1

### Correct answer:

The dot that is farthest away from the heavy vehicle. At this location, Axelle and Pitchouf are far enough away to be seen by the driver.



If they want to cross, they must first be sure to make eye contact with the driver.

## SITUATION 2

### Correct answer:

The dot on the sidewalk, to the left of the heavy vehicle, near the pedestrian crosswalk.



The dot in the street is not an option, for obvious reasons. The dot to the right of the heavy vehicle is too close to the vehicle. Axelle and Pitchouf would be in a blind spot.

## SITUATION 3

### Correct answer:

The dot that is farthest away from the heavy vehicle, on the sidewalk. The driver can get a good view of Axelle and Pitchouf.



The two dots near the heavy vehicle are in a blind spot. The dot at the corner of the street is far enough away for the driver to see Axelle and Pitchouf. However, they are very close to the side of the street.



Heavy vehicles sometimes encroach on the sidewalk when making a turn. That is why it is best to stay on the portion of the sidewalk that is farthest from the street. That way, it is easier to maintain eye contact with the driver of the vehicle.

# Around large vehicles



## SITUATION 4

### Correct answer:

The dot on the sidewalk, far away from the entrance to the parking lot. However, before continuing on their way, Axelle and Pitchouf must make sure the driver has seen them and is letting them go ahead or that the vehicle is far enough away from the parking lot entrance.



There are two dots in the parking lot. However, walking in a parking lot is dangerous, and even more so when there is a snow removal truck. Moreover, one of these dots is in the snow removal truck's blind spot.

The other dots are on the sidewalk, but they are very close to the moving snow removal truck.

This type of vehicle is not standard, so the blind spot areas therefore vary. This illustration shows a danger zone from which we should stay away.

## SITUATION 5

### Correct answer:

The dot on the sidewalk, far away from the two vehicles.



As in situation 4, some dots are in the parking lot and one of them is in the heavy vehicle's rear blind spot.

Even on the sidewalk, it is best to move as close as possible to the side of the sidewalk that is farthest from the street, especially when a snow removal vehicle is approaching. That way, we can be sure not to come into contact with the "plow."



Walking in a parking lot is never recommended, even if it is the shortest route.



Snow removal vehicles can be a danger, particularly in a parking lot, given their sizeable blind spots and the fact that they have to move forward and in reverse often to do their work.



### COMPLEMENTARY EXERCISE

#### Gaining a good understanding of blind spots

Here is an exercise to do with the children for them to experiment with the concept of blind spots.

Ask them to look straight ahead, keeping their head straight, and stretch their arms forward, with their hands at face level and their thumbs up.

Can they see their hands? Yes!

Can they see their feet? No. Yet, they are there, but they are in blind spots!

You can redo this exercise with them by having them stretch their arms out to their sides to form a 180-degree angle, in other words, until they can no longer see their hands.

Société de l'assurance  
automobile

Québec



Avec vous,  
au cœur de votre sécurité